

# **WASH for Public Health Programme (WASH4PHP) 2015-2019**

**WASH in Health Care Facilities  
National Level Learning Alliance  
Platform (NLLAP)**

**10 December, 2015**

**Dr. Chaka Uzundu**

**WASH and Health Focal Lead**

**WaterAid Ghana**



# WASH In Health Care Facilities

## Overview of Presentation:

- 1. Healthy Start – Water Aid Global Advocacy Priority**
- 2. Preliminary Situational Analysis**
- 3. WASH for Public Health Programme**



# Healthy Start

# WASH In Health Care Facilities

## Preliminary Situational Analysis



# WASH In Health Care Facilities

## Preliminary Situational Analysis



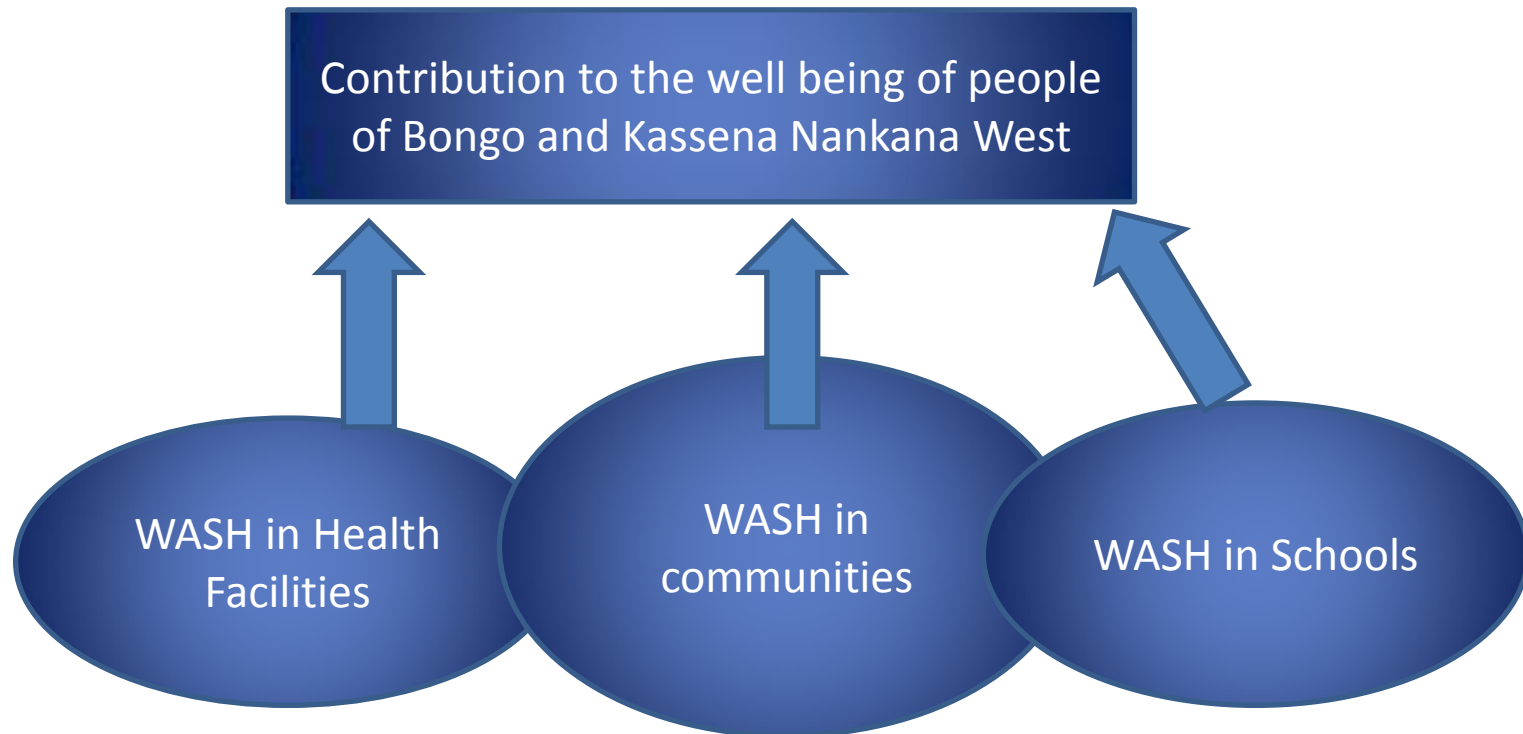
# WASH In Health Care Facilities

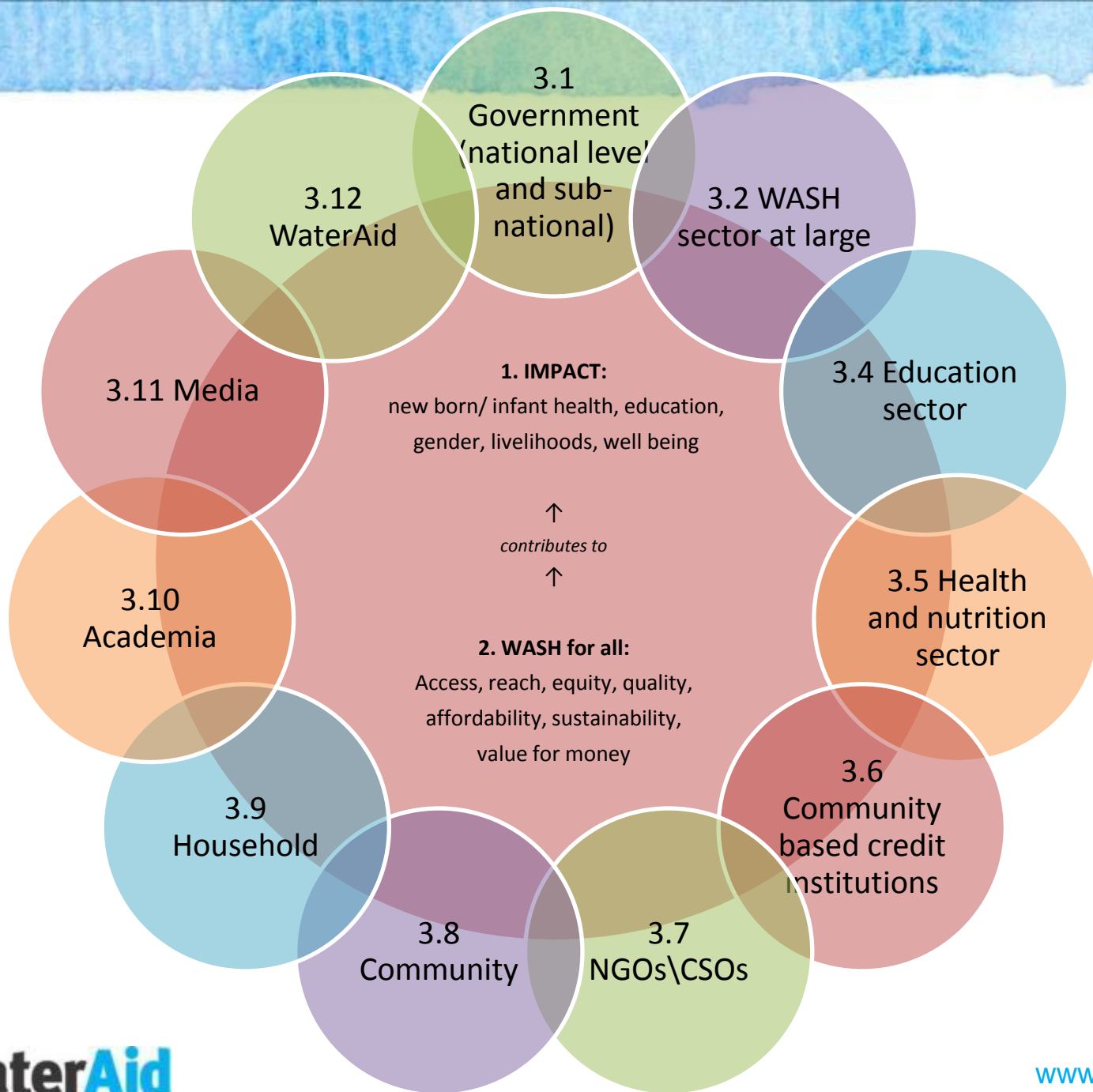
## **Preliminary Situational Analysis**

### **Some Initial Findings:**

[Preliminary Situational Analysis Bongo and  
Kassena Nankana West 9 December  
2015.docx](#)

# WASH for Public Health Programme (WASH4PHP) 2015-2019







# WASH for Public Health Programme

## Hygiene Behaviour Change

Endogenous Development –Community Hygiene and Sanitation Promotion Process (ED-CHaSP)

–Culturally appropriate and community led hygiene promotion

## Behaviour Change Communication

–District Wide Approach

# WASH for Public Health Programme

## Sanitation

- In Health Care Facilities

- Biofill/biogas technologies; incinerators; Laundry facilities; RWH; “waste” water management

- In Schools

- Menstrual Hygiene Management (MHM); Biofill technologies; incinerators; RWH; grey water mgmt.

- In Communities

- Household latrine Usage Promotion

**Latrine Artisans, Community Health & Hygiene Workers, BCC, & \*community\* WASH financing**

# WASH for Public Health Programme

## Water

- In Health Care Facilities

Mechanized Bore holes (solar powered); fluoride removal plants; RWH; O&M\*;

- In Schools

- bore hole; roof top rain water harvesting

- In Communities

- Mechanized Bore hole (Solar powered); RWH

# WASH for Public Health Programme

## Capacity Strengthening

MMDA

- Long term strategic planning
- Strategic financial planning

## Health Systems Strengthening

- WASH and Health Linkages (with GHS)
- BCC (*for HCFs/by HCFs*)

## Rooted advocacy

- Endogenous Development Approach and HRBA

# WASH for Public Health Programme

## Advocacy

- Budget Tracking
- Rights holders – Duty Bearers Engagement Fora
- Sector finance
- Institutional strengthening

# WASH for Public Health Programme

## Monitoring, Evaluation and Knowledge Management

- WASH and Health Research
- Strengthening school based monitoring
- Strengthening health facilities based monitoring
- Sector wide coordination
- Sector wide performance monitoring and evaluation

# Thank You

Contact WaterAid Ghana at [www.wateraid.org/ghana](http://www.wateraid.org/ghana)  
Contact Chaka Uzundu at [chakauzundu@wateraid.org](mailto:chakauzundu@wateraid.org)