

GHANA GUINEA WORM ERADICATION PROGRAMME

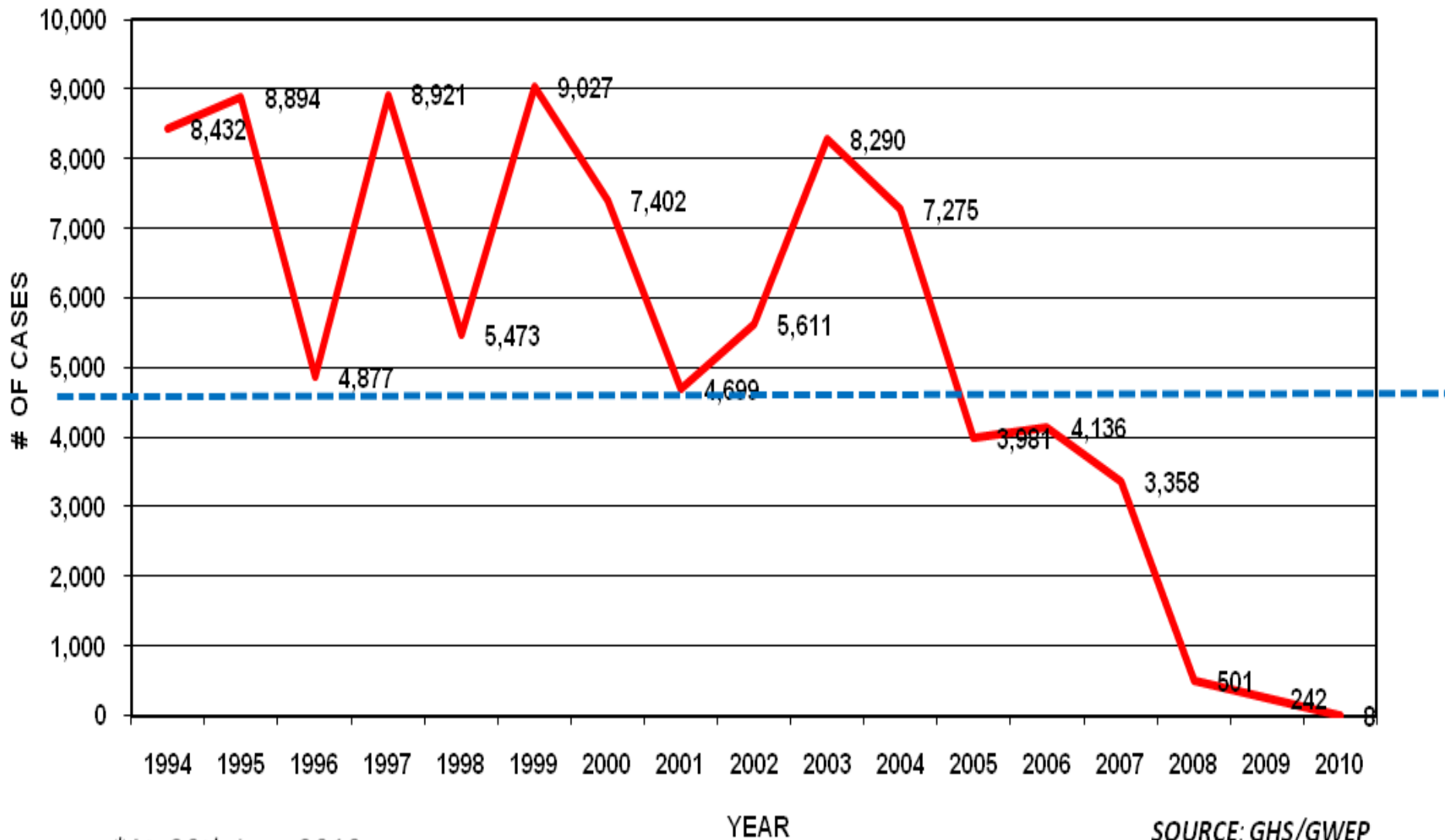
**NATIONAL OVERVIEW OF THE
STATUS OF GUINEA WORM.**

**PRESENTED AT
MOLE XXI CONFERENCE**

KEY HIGHLIGHTS

- Ghana recorded 8 Guinea Worm cases January 1 2010 – June 31, 2010. 97% reduction in cases over same period (Jan – June 2009) where 228 cases were recorded.
- All 8 cases were recorded in the Northern Region.
- No Guinea worm case recorded in Central Gonja which was the most endemic district in 2009
- Diare in Savelugu – Nanton district is currently the most endemic village in Ghana
- Cases recorded are; Bunkwa=1, Karaga Town=1, Dipali=2, and Diare=4.

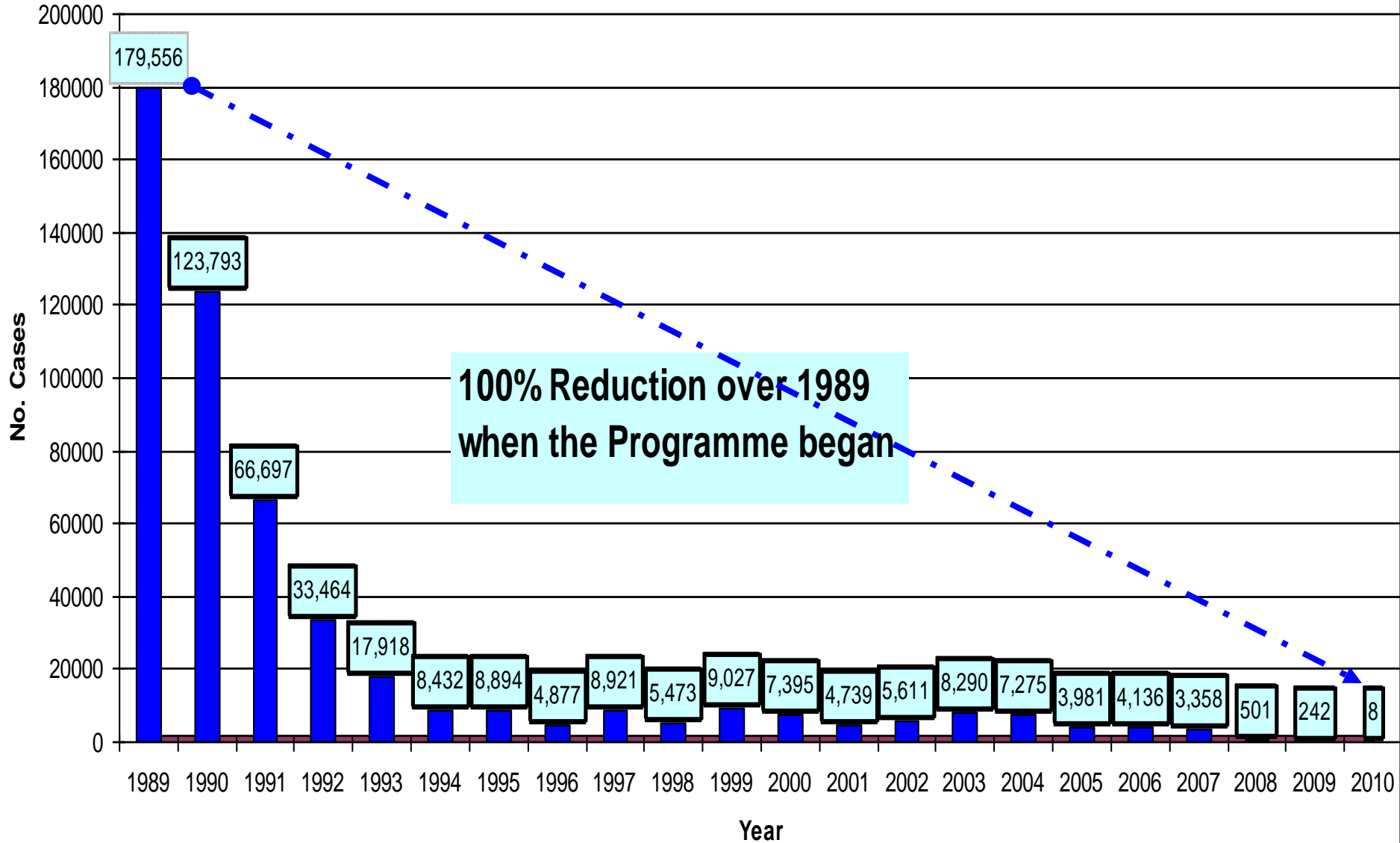
Annual Incidence of Guinea Worm Disease in Ghana 1994 - 2010*



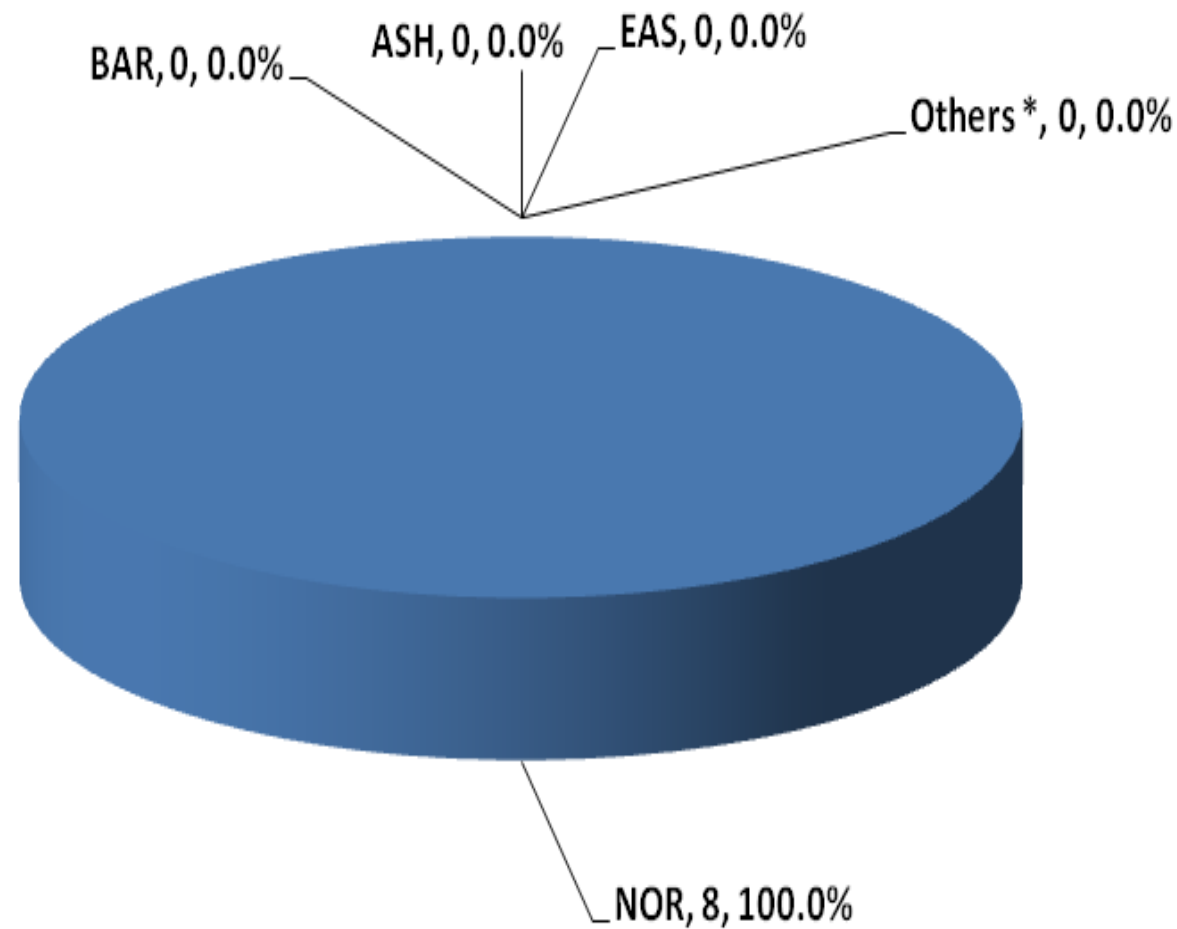
*At 30th June 2010

SOURCE: GHS/GWEP

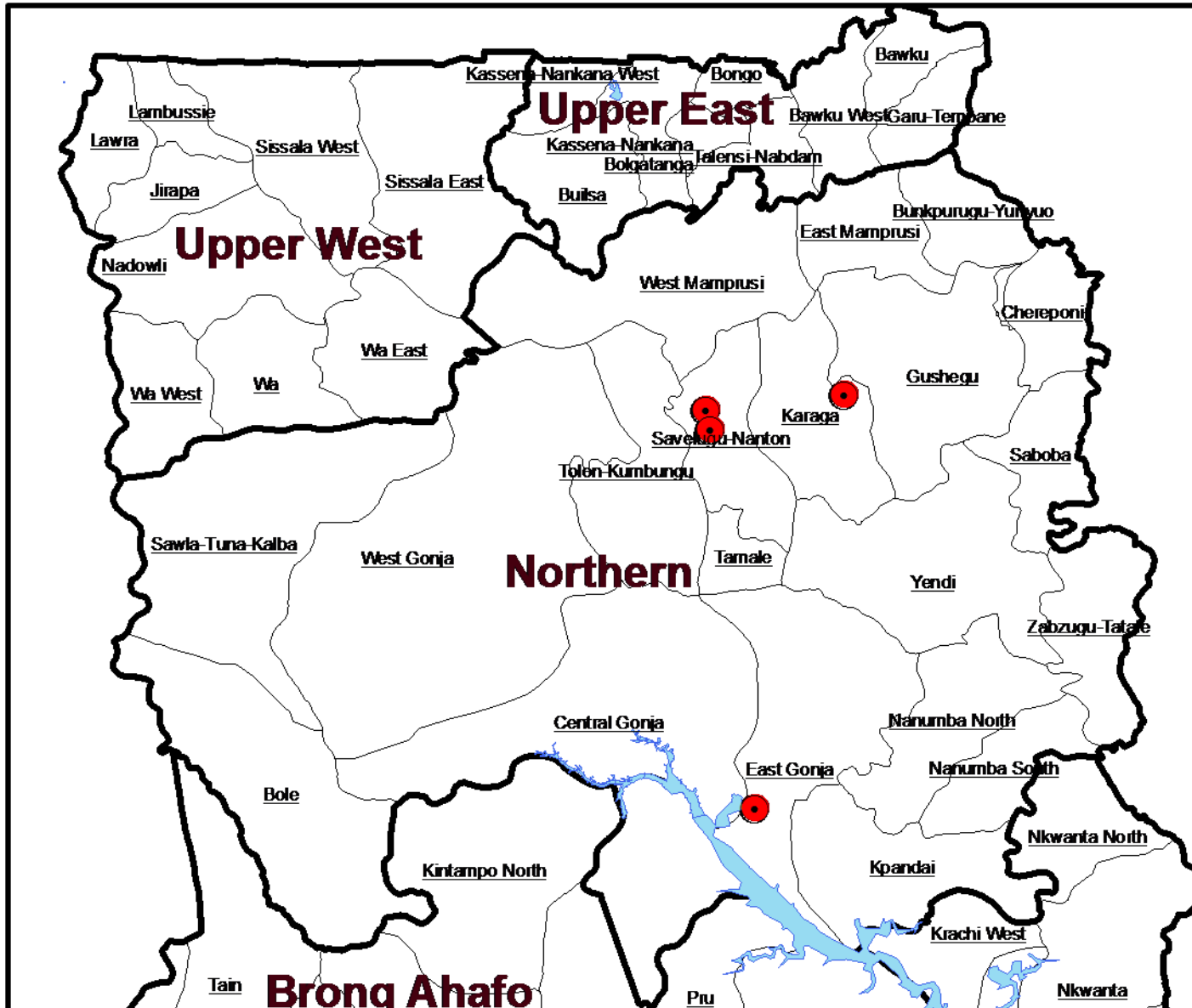
Annual Incidence of Guinea Worm Disease in Ghana 1989 to 2010



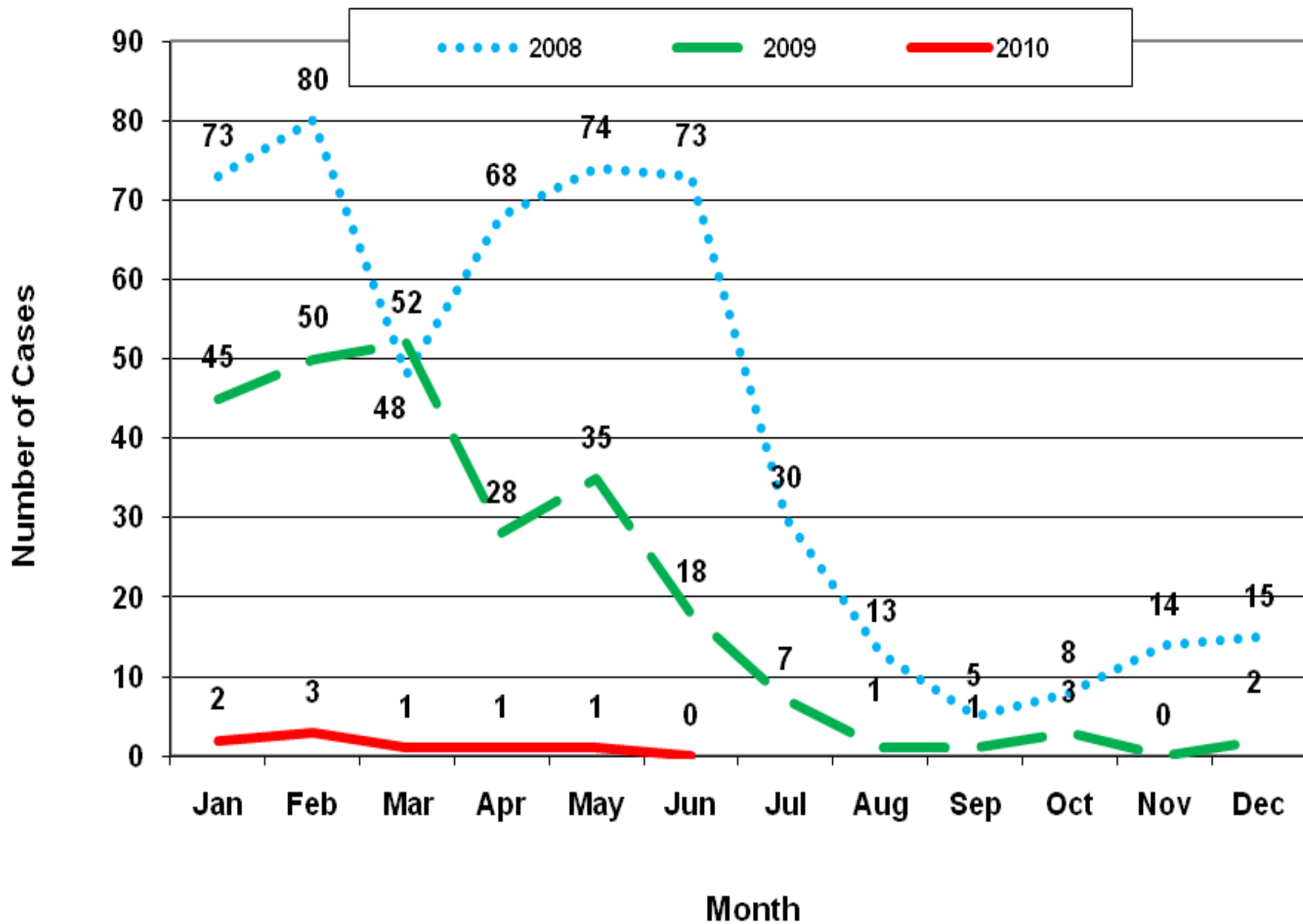
Regional Distribution of 8 cases of Guinea Worm Cases Reported in Ghana during Jan - Jun 2010



Location of Villages Reporting indigenous cases in 2010

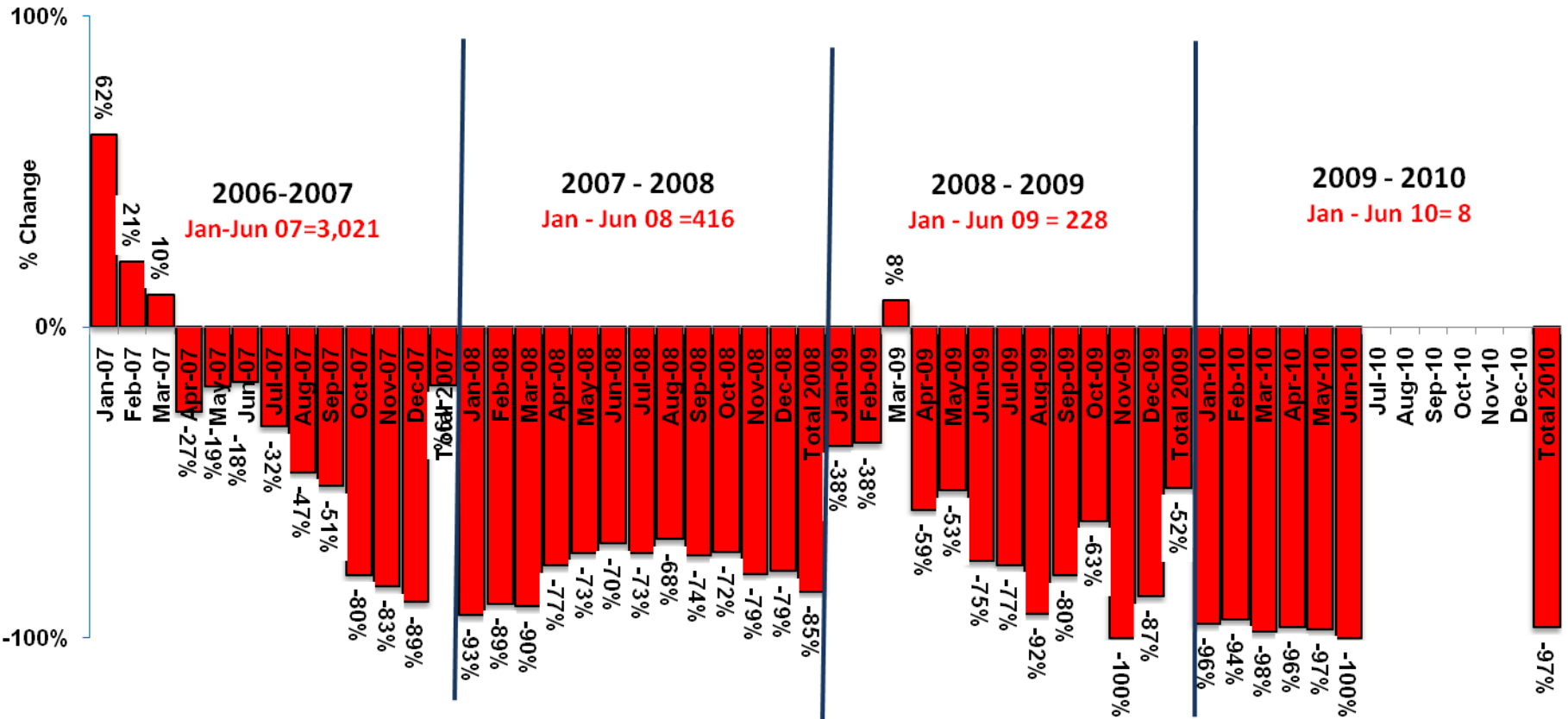


Guinea Worm Cases by Month in Ghana 2008 - 2010



GHANA GUINEA WORM ERADICATION PROGRAMME

% CHANGE in MONTHLY INCIDENCE OF GWD, 2007-2010*



*Last case emerged/ reported this year: 11th May 2010
Last case contained: 2nd Jun. 2010

Month

GHANA GUINEA WORM ERADICATION PROGRAM

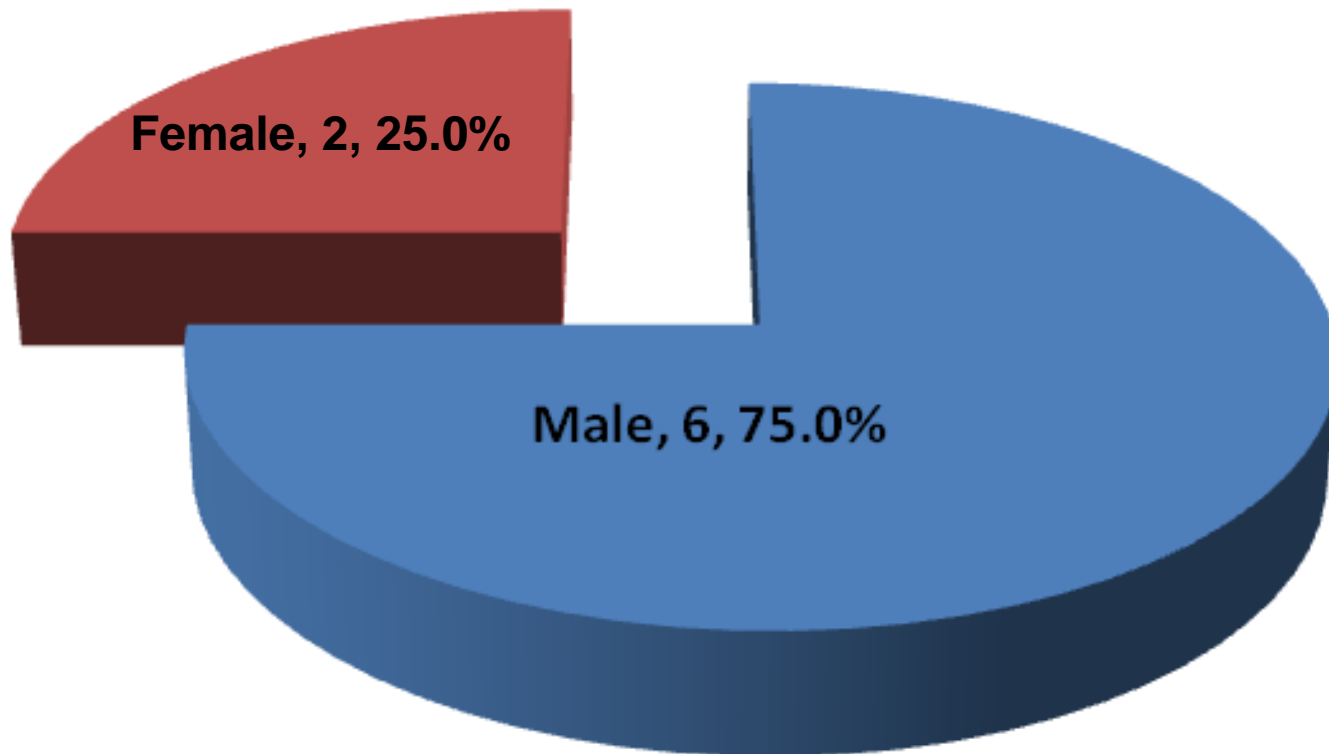
Status of 13 Districts of that Reported 1+ Cases in 2009

DISTRICTS ARRANGED IN DESCENDING ORDER OF PERCENTAGE REDUCTION IN 2010

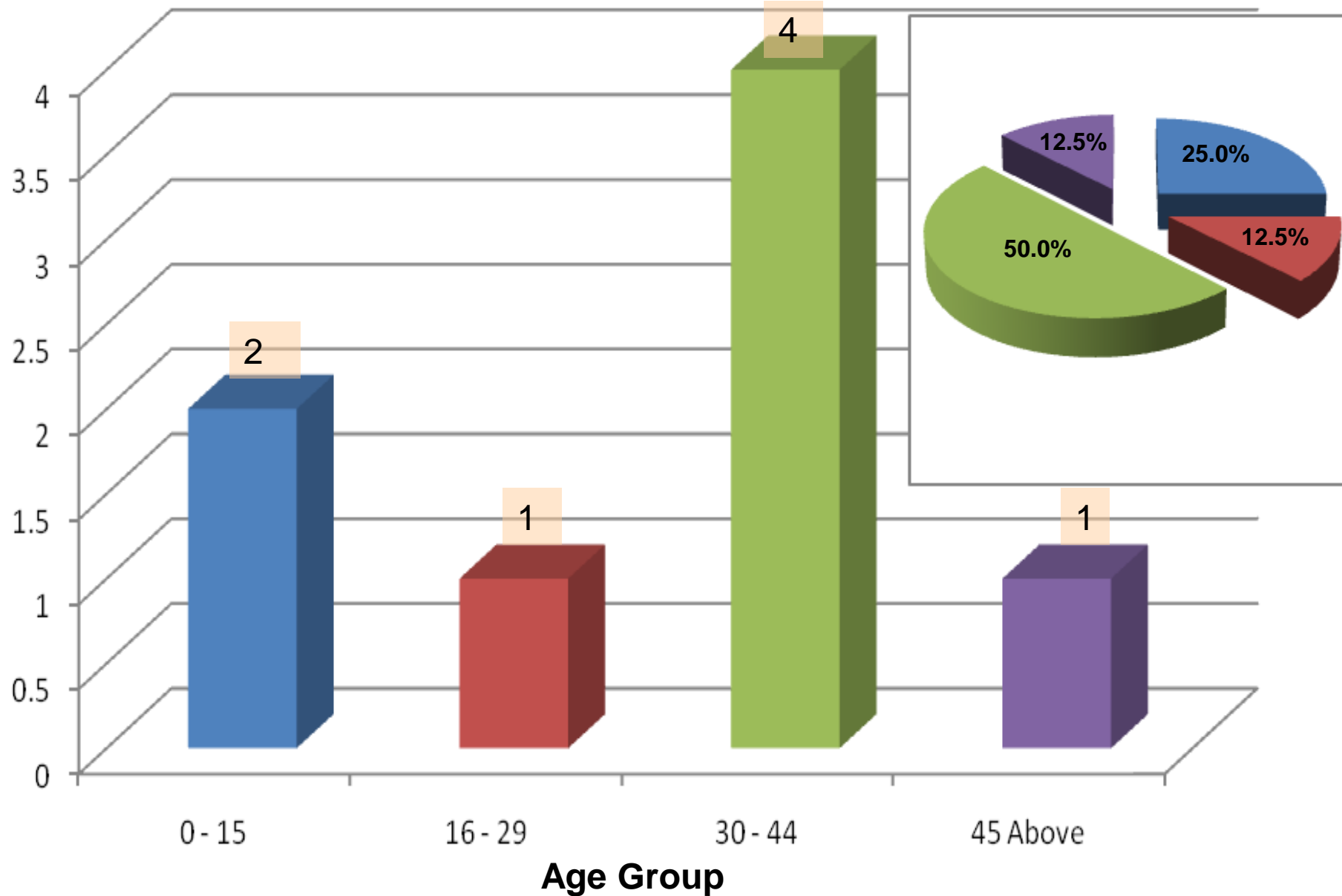
Dist #	District	Jan-Dec 2009	Cases Reported		% CHANGE
			Jan-July 2009	Jan-Jul 2010	
1	Central Gonja	148	148	0	-100%
2	Tamale	9	8	0	-100%
3	Yendi	7	7	0	-100%
4	Tolon-Kumbungu	6	6	0	-100%
5	West Gonja	4	4	0	-100%
6	Ejura-Sekyedumasi	2	7	0	-100%
7	Kintampo North	2	2	0	-100%
8	Kwahu North	1	1	0	-100%
9	Chereponi	1	1	0	-100%
10	Gushiegu	1	1	0	-100%
11	East Gonja	11	11	1	-91%
12	Savelugu-Nanton	47	41	6	-85%
13	Karaga	3	3	1	-87%
	Sub-Total	242	235	8	-87%
	Other Districts *	0	0	0	-100%
	Ghana Total	242	235	8	-88%

SOURCE: GH SIGWEP

Distribution of GW Cases by Sex (Jan – June 2010)



Age Distribution of GW Cases, January - June 2010



Status of 8 cases reported in Ghana by Month

Jan – Jun, 2010

MONTH	NUMBER OF CASES	CASES CONTAINED	% CONT.	CONT.AT HEALTH /CC CENTER	% CONT. AT CCC	CASES CURRENTLY PENDING
JANUARY	2	2	100%	2	100%	0
FEBRUARY	3	3	100%	3	100%	0
MARCH	1	1	100%	1	100%	0
APRIL	1	1	100%	1	100%	0
MAY	1	1	100%	1	100%	0
JUNE	0	0	-	-	-	-
TOTAL	8	8	100%	8	100%	0

Tracking of High Risk uncontained cases, 2009-2010

NO	MONTH	DISTRICT	VILL. DETECTED	NAME OF CASE	REASONS FOR NON-CONT.	CLASSIFICATION
1.	Feb-09	Kintampo N.	Gulumpe	Sumaila Mahama	Entered water source	High Risk
2.	Mar-09	Central Gonja	Kusawgu	Ayishetu Mumuni	Not detected within 24hrs	High Risk
3.	Mar-09	Savelugu	Savelugu	Fozia Abukari	Not Bandaged within 24hrs	High Risk
4.	May-09	Savelugu	Dipali	Samata Yakubu	Not detected within 24hrs	High Risk
5.	May-09	Savelugu	Savelugu	Sumaya Adam	Entered water source	High Risk
6.	June-09	Savelugu	Diare	Abukari Sulemana	Not detected within 24hrs	High Risk
7.	Jul-09	Savelugu	Tampion	Barikisu Issah	Not detected within 24hrs	High Risk

Status of 13 Endemic Districts of 2009 and Cases reported in 2010

No.	District	Endemic Villages under Surveillance	Cases Recorded
1	CENTRAL GONJA	5	0
2	CHEREPONI	0	0
3	EAST GONJA	2	1
4	GUSHEGU	1	0
5	KARAGA	1	1
6	SABOBA	0	0
7	SAVELUGU NANTON	5	6
8	TAMALE	1	0
9	TOLON-KUMBUNGU	1	0
10	WEST GONJA	0	0
11	WEST MAMPRUSI	0	0
12	YENDI	2	0
13	KINTAMPO NORTH	1	0
TOTAL		19	8

CASE SERIAL #: 1
EPID #: GHA-NOR-KAR-10-0001
NAME: IMORO KARIM
AGE: 15 YEARS
SEX: MALE
ETHNICITY: DAGOMBA
OCCUPATION: SCHOOL (PRIM. 5)
RESIDENCE (CURRENT): KARAGA TOWN
(Yapalsi-fong)
LOCATION DETECTED: KARAGA TOWN
(Yapalsi-fong)
DATE DETECTED: 22/01/2010
**SYMPTOMS/SIGNS ON
DETECTION:** BLISTER
DATE ADMITTED HF/CC: 26/01/2010
DATE EMERGED: 30/01/2010
DATE FULLY EXPELLED: N/A
DATE DISCHARGED: 25/02/2010
CONTAINED: YES (CCC, TAM)
WORM STATUS: CUT BACK ON 10/02/2010
FINAL CLASSIFICATION: INDIGENOUS
IF IMPORTED, ORIGIN: N/A
LINK: [SHEIGBUNI FARM POND \(WAS USED BY 2009 CASE AND IS A FRIEND OF 2010 CASE\).](#)



MAJOR CHALLENGES

- **SHIFTING DEMOGRAPHICS**
- **HIDDEN PONDS**

NEXT STEPS

- SURVEILLANCE PROJECT
 - SENSITIZATION OF HEALTH STAFF ON IDSR/GWE Proj.
 - TRAINING & EQUIPING VVs
 - MONITORING, SUPERVISION & FEEDBACK
- COMMUNITY SENSITIZATION
 - BCC STRATEGY
 - MEETINGS WITH CHILDREN
- NATIONAL SENSITIZATION, AWARENESS CREATION. (Media)

CONCLUSION

- SIGNIFICANT ACHIEVEMENTS SINCE 2005: SENSITIVITY OF SURVEILLANCE, RATE & QUALITY OF CONTAINMENT & CASE REDUCTION HAVE IMPROVED
- REMAINING CHALLENGES: COMPREHENSIVE SURVEILLANCE COUNTRYWIDE, WITH PROPER DOCUMENTATION, RECORD KEEPING & EASY RETRIEVAL
- MORE REOURCES NEEDED: COMMITMENT OF ALL PARTNERS & TIMELY RELEASE OF ADEQUATE FUNDS

**WE ACKNOWLEDGE AND
THANK ALL OUR
PARTNERS FOR THEIR
UNRELENTING SUPPORT**

THE END

