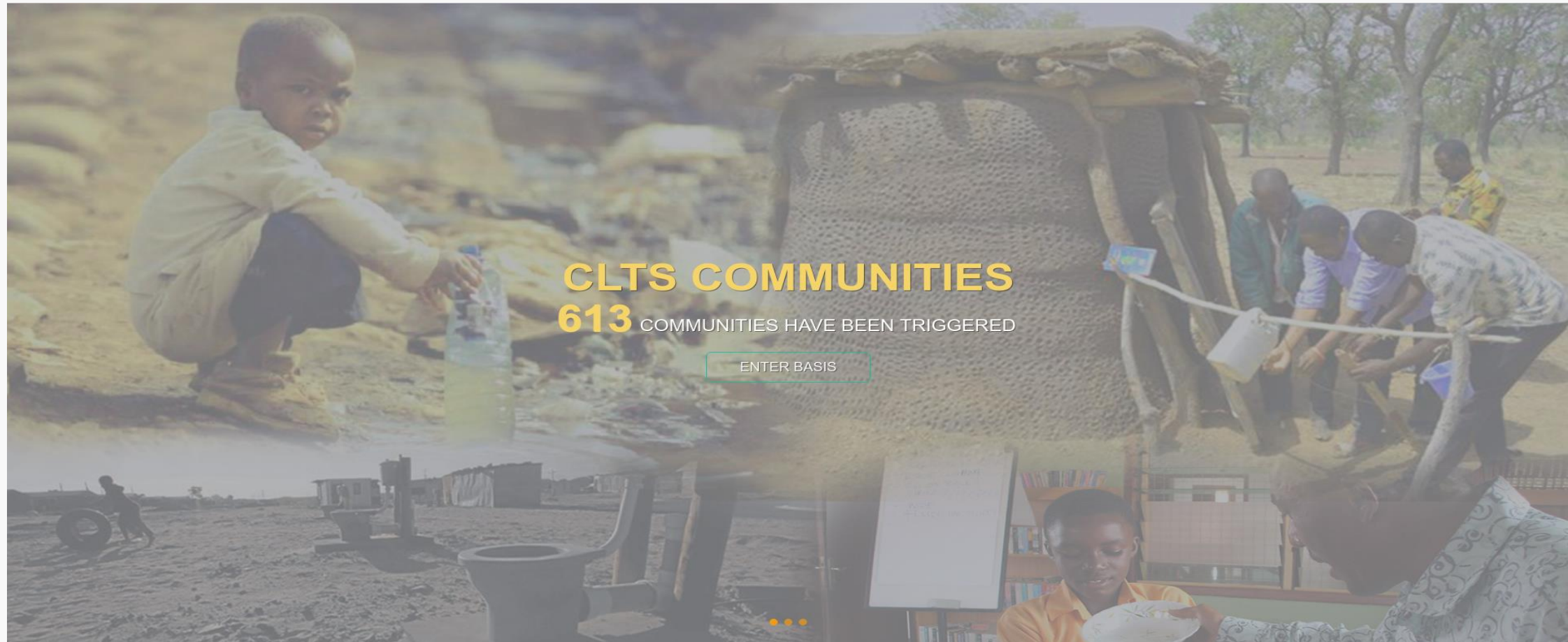
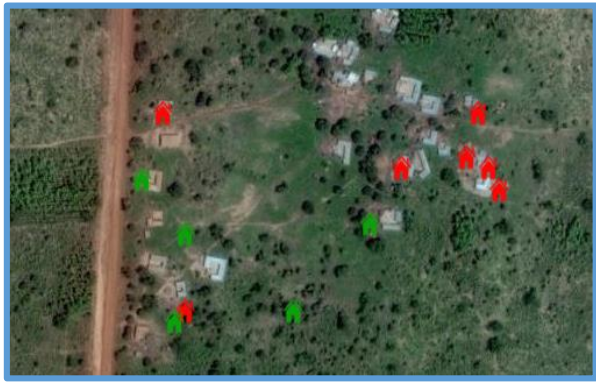


Basic Sanitation Information System (BaSIS)

BaSIS – CLTS data management tool for districts .





Household Details

Health Facility
Sanitation
Details

Hand Wash Info

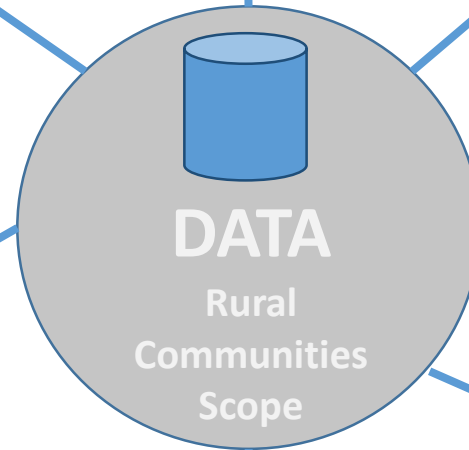
School Sanitation
Details

Other useful sanitation &
hygiene indicators
pertaining to CLTS

Natural Leader
Details



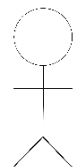
Latrine Details



BASIS SYSTEM DEVELOPMENT

CERSGIS  **CERSGIS**

MIS Consultant



TARGETS/USAGE

SECTOR MINISTRY
EHSD/DCD
Development Partners/ NGOs
RPCU/RICCS
DPCU/DICCS
Field Facilitators
Sector Consultant

PEOPLE

DATA SOURCE

Field facilitators

VALIDATION

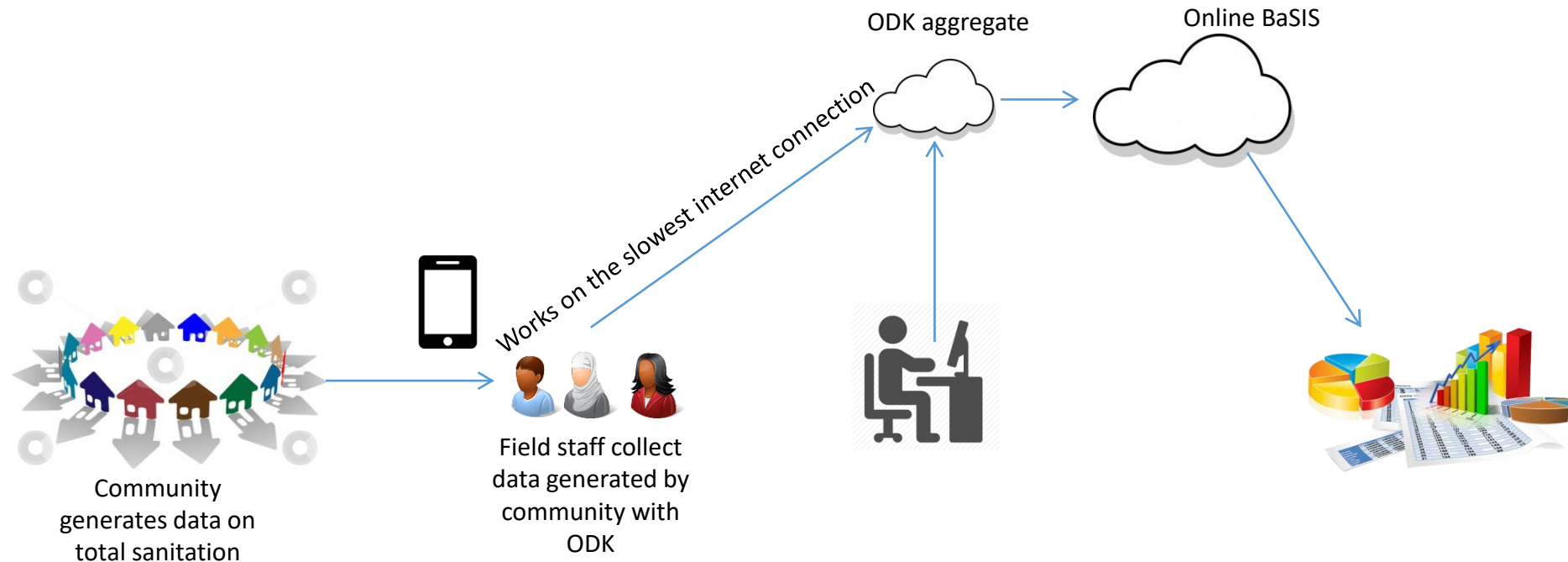
Baseline Data validated by
M&E Team:
Planner, EHSD, SHEP
MIS Consultant

PARTNERS

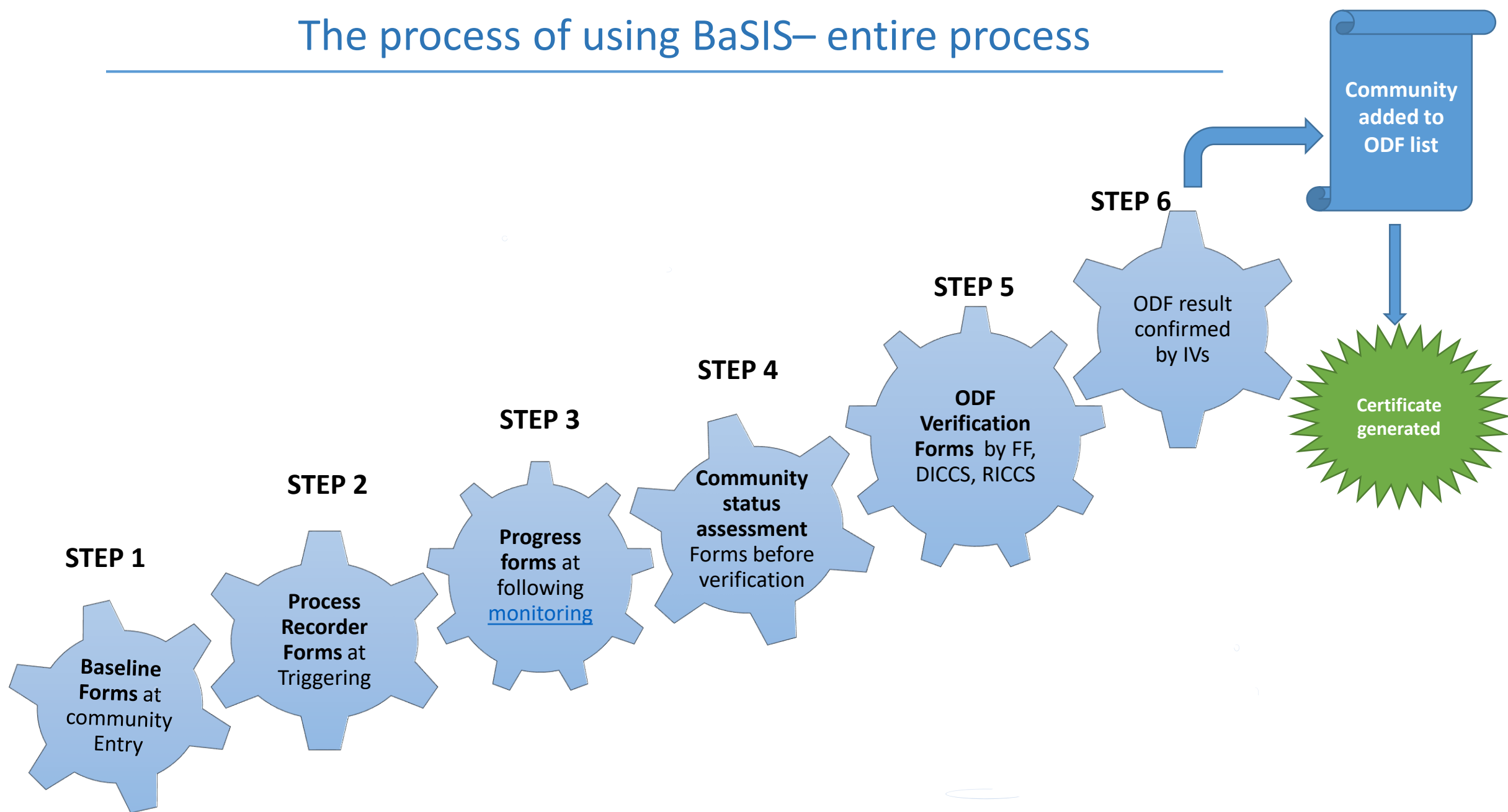
GoG/UNICEF RING
World Vision SPRING
Global Communities
CWSA-Central Region (SRSP)
*Many more expected to be added

BaSIS – Data Flow

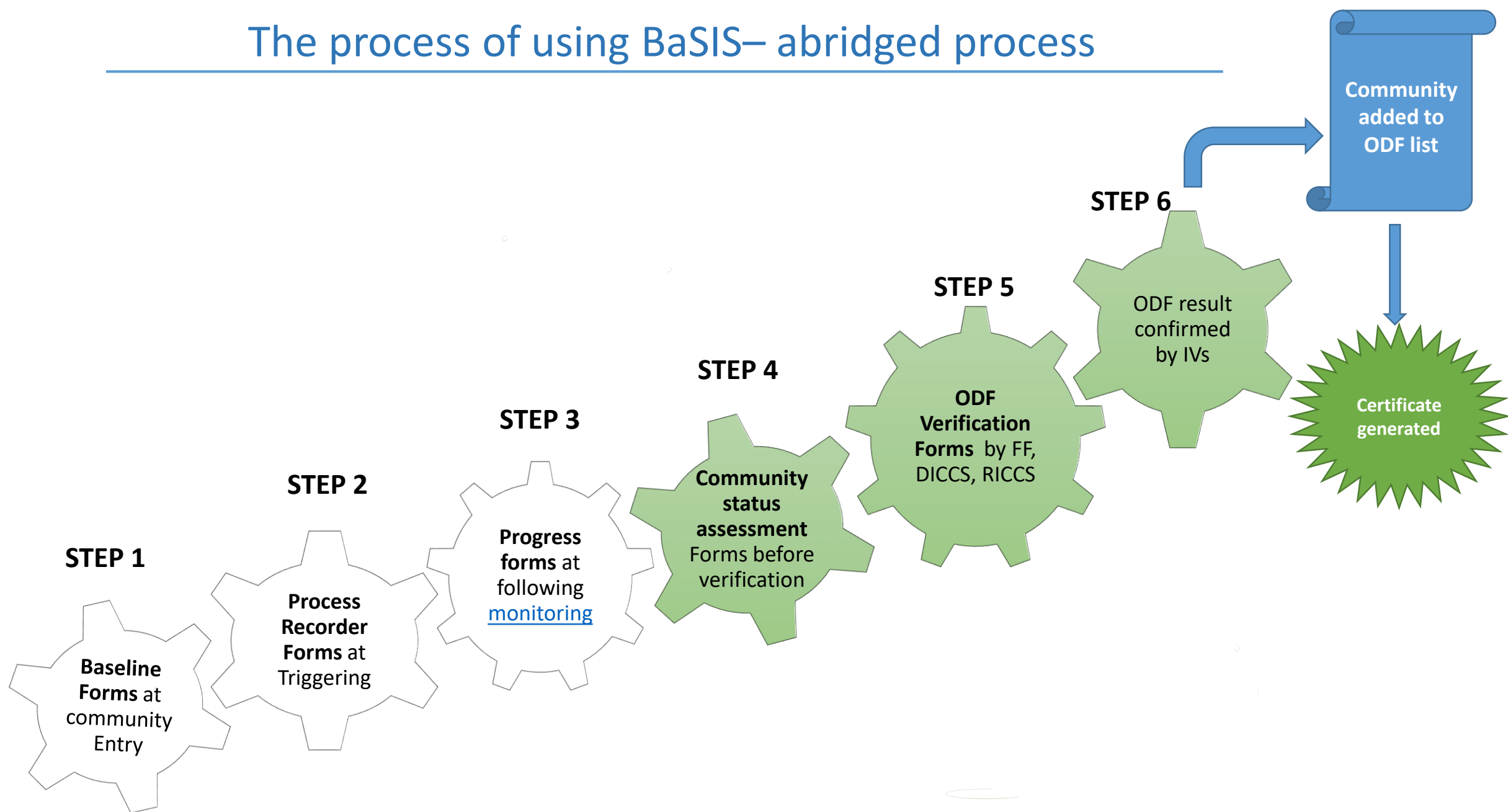
- Questionnaires designed using digitized Forms
- Data collection using the ODK app which runs on any android device with GPS functionality
- Data sent via the internet to the ODK aggregate online
- Data is mapped into BaSIS following final review and sign off by district M&E teams



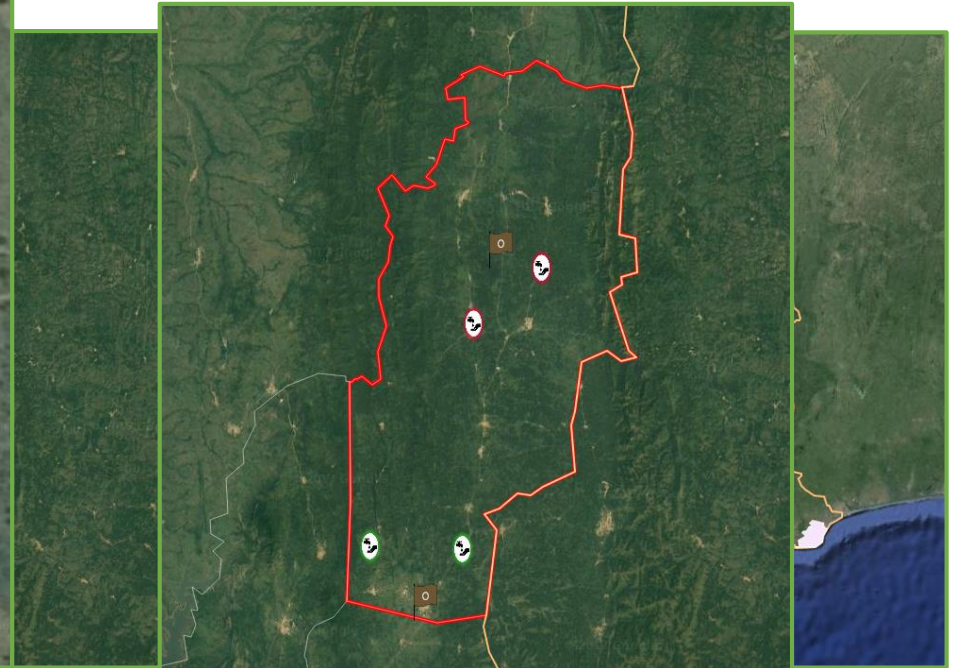
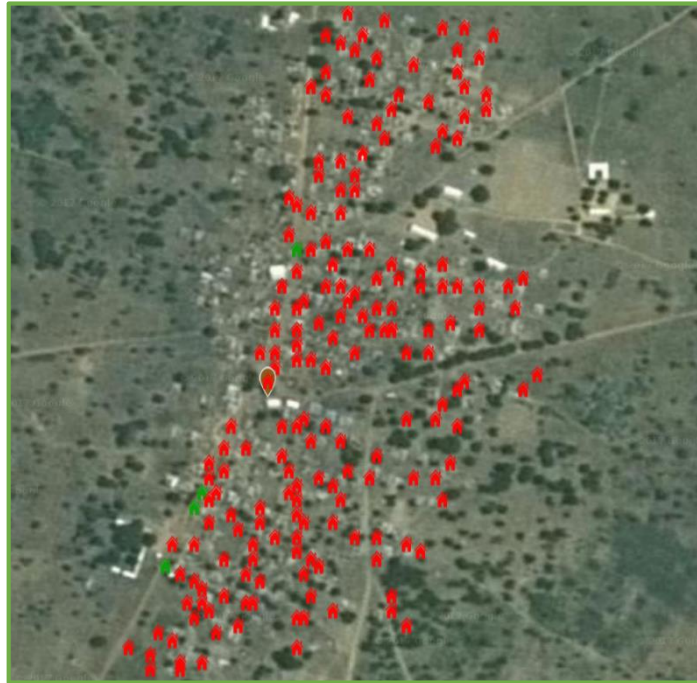
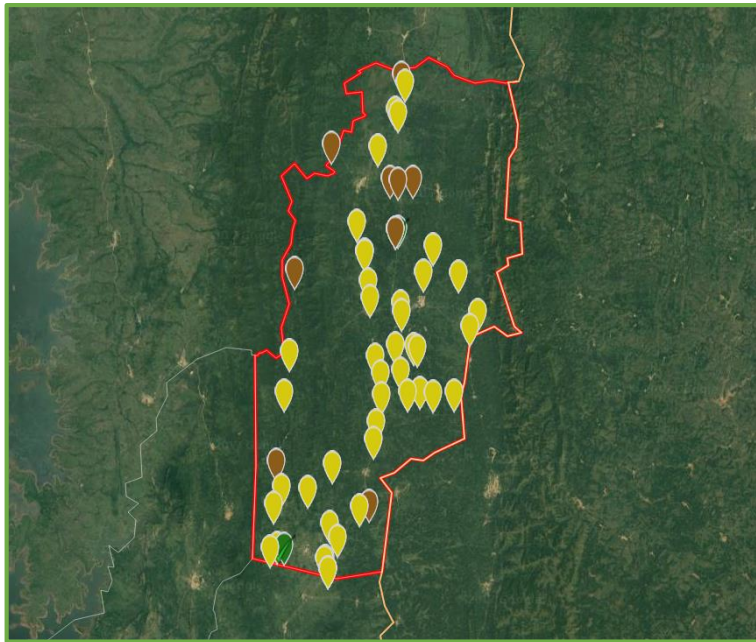
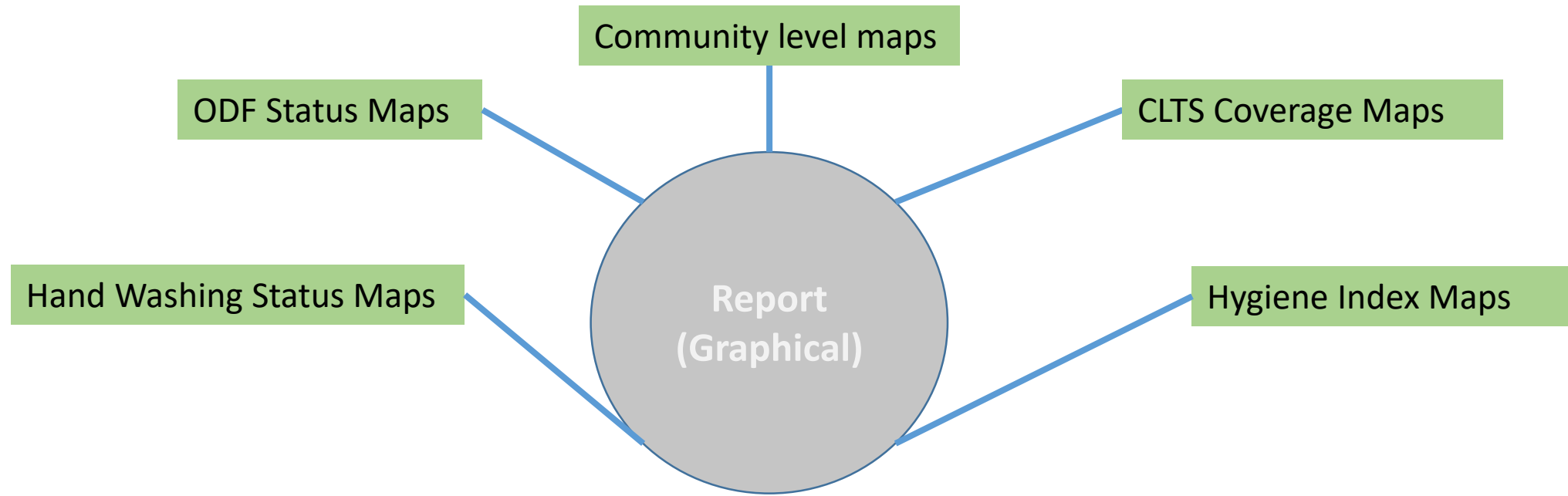
The process of using BaSIS– entire process



The process of using BaSIS– abridged process



BaSIS Data Visualization



DASHBOARD




KETA MUNICIPAL

User level > Deho

| Follow-up Reports | | | | | | | |
|--|---------------|------------|-------------------|-----------------|------------------|--------------------|-------------|
| SMS Communities Households Health Facilities School Other Facilities | | | | | | | |
| Facilitator Name | Community | ODF status | No. Of Households | No. Of Latrines | Follow Up Status | Last Date Of Visit | Is Verified |
| Florence Abusah | Gbetuinu | Od | 18 | 10 | YES | Jan. 25, 2017 | No |
| Peter Agboga | Koviepe | Od | 9 | 5 | YES | March 28, 2017 | No |
| | Lividzi | Od | 9 | 2 | YES | April 6, 2017 | No |
| | Nyakpatsi | Od | 9 | 0 | YES | April 1, 2017 | No |
| Richard Agbenyega | Yegbekope | Od | 9 | 4 | YES | March 28, 2017 | No |
| Florence Abusah | Agboletekope | Od Basic | 3 | 2 | YES | Jan. 20, 2017 | No |
| | Awadzagblidzi | Od | 10 | 3 | YES | March 24, 2017 | No |
| James Adekpuitor | Banyakope | Od | 25 | 17 | YES | March 22, 2017 | No |

| | |
|---|---|
|  | TARGET FOR COMMUNITIES 11 11 Achieved so far |
|  | TARGET FOR LATRINES CONSTRUCTED 139 88 Achieved so far |
|  | TARGET FOR COMMUNITIES TO ATTAIN ODF 11 0 Attained so far |
|  | TARGET OF LATRINES WITH HWWWS 139 0 % Achieved so far |

| District Personnels | | | |
|-------------------------|-----------|-------------------|-------------------|
| Show 10 entries Search: | | | |
| Name Personnel | Contact | Email Address | Personnel Type |
| Bennett Glymin | 243833070 | None | field facilitator |
| Charles Osabutey | 242147729 | None | field facilitator |
| Emmanuel telu | 545820844 | None | field facilitator |
| Florence Abusah | None | fahusah@gmail.com | field facilitator |

| Notifications | |
|---|--|
|  | kadjebi odf not working New SMS |
|  | kadjebi sadasdfasdfafafa New SMS |
|  | kadjebi ALL MEMBERS ARE SUSPOSE TO COME TO THE OFFICE FOR THE M... New SMS |

Way forward -BaSIS Upgrade

- Refreshers on using data capturing tool and BaSIS operating procedures
- Data review process
- Visualization of partners data – more national picture of CLTS intervention in Ghana
- Link SanMark to BaSIS

BaSIS: Experiences from VR

by

Joshua Ofosuhenne

UNICEF WASH Scale-Up Consultant

13th July, 2017, NODA HOTEL

What has worked well?

- Baseline data provides an **opportunity to validate communities' statistics** and also to know where communities are at the start of implementation. It has also enabled the determination of targets and design of their intervention.
- **Real time update** is provided and is available to all stakeholders once it is uploaded.
- HWWS and HWTS surveys have been integrated with CLTS surveys to allow for uniformity and ease of administering surveys

What has worked well cont..

- Data collection for BaSIS has helped Districts to **have updated information on communities** which previously wasn't available
- **GPS information** on latrines and pictures help in confirming the existence of the facility, and allows for projection of innovations during and after latrine construction
- **Regular reminders** by RC to FFs through DRPs helps to make FFs conscious of regular data collection and submission.
- **Thorough review of survey questionnaire** helps to minimise errors and frustrations during data collection which sometimes is a disincentive.

What hasn't worked well?

- **Delays in taking GPS readings and inability of some Officers to administer questionnaire on android phones** even though they have been several coaching sessions.
- **DAs don't have adequate M&E (I.T) Officers** to facilitate regular submission of updates, data validations and also access BaSIS for feedbacks.
- **Data collection phones have been treated as private property** and Officers refuse to release it for work even when they are not in use

What hasn't worked well cont...

- **Data validation takes time** because Officers are located in their zones. This delays the roll-out of progress forms.
- **Multiple forms on phones** and the need for a reload of forms after every revision is a disincentive, as Officers sometimes struggle to identify the appropriate form to use.
- **Mismanagement of phones:** Broken screens, battery and charging problems. Phones have not been captured as part of DA's assets (even though agreement forms were signed), and so ownership for repairs and replacement is problematic.



Way forward -recommendations

- **Re-activate M&E teams and assign M&E Focal persons** to generate reports from BaSIS for DICCS and Facilitator team meetings
- **Generate maps and info-graphics monthly from BaSIS** and share with Regional Minister and M/DCEs for decision making
- **Use outputs from BaSIS to generate information for District league tables** to encourage use of BaSIS.
- **Provide a cut off point** beyond which reports are expected from BaSIS
- **Data collection phones must be captured in DA's assets register**, and efforts made to assess their conditions from time to time.
- **Efforts should be made to identify and load all communities in the District** onto data collection forms, under each electoral area, to prevent back and forth with new community uploads, which creates multiple forms.

Way forward –recommendations and actions

- All Partners have 3 month to submit list of all ODF communities to be uploaded onto BaSIS

**For data to be plotted on the coverage map, communities should be submitted with GPS coordinates*

- Beyond October, 2017 all Partners are expected to submit detailed data per the procedure on BaSIS before communities will be identified as ODF on BaSIS.

Live Demo !

How data is collected and visualized in real time

Live Demo

- Download ODK app on Google Playstore
- Set the ODK app to <https://gh-clts-ghana.appspot.com>
- Download the any form, complete and send
- Showcase of data on aggregate
- How live data is presented on BaSIS

Q&A

kiitos
köszönöm
tānan
tak
grazas
paldies
gracias
godiya
grazzi
dēkui
dank
thankS
dankie
falēnderim
esker
danke
merci
dīky
salamat
hvala
gràcies
t
s
kkür
grazie
dankon
gras
ekele