

STRENGTHENING LOCAL G. CAPACITY IN WATER AND SANITATION DELIVERY

ACHIEVING FULL WATER COVERAGE AND SUSTAINABLE WATER SERVICE PROVISION: THE NEEDS AND THE GAPS

REPORT ON STUDY AREA-

BONGO, EAST GONJA AND WA EAST DISTRICT ASSEMBLY

**WORLANYO KWADJO SIABI
DR CAROLYN KUMASI
R. K. D. VANESS
JOHN G. ADUAKYE**

28TH SEPTEMBER 2017

PRESENTATION OUTLINE

- Introduction and Scope of the Research
- Methodology and Study Approach
- Resources projections
- Assumptions
- Recommendations
- Emerging issues

INTRODUCTION

- ❑ Conrad N. Hilton Foundation is supporting implementation of the project known as “Strengthening Local Government Capacity to Deliver Water Services”
- ❑ The study was undertaken in a collaborative effort involving the grantees, public institution (CWSA), IRC and DAs.
- ❑ The Conrad N. Hilton supported intervention has a 3 year duration: July 2014- June 2017).
- ❑ The Study area - Bongo (Upper East), East Gonja (Northern Region) and Wa East in Upper West

INTRODUCTION/2

- ❑ In Ghana 5 regions namely Northern, Upper East, Upper West, Brong Ahafo, Volta are participating.
- ❑ The research titled achieving full water coverage and sustainable service provision: the needs and gaps was developed as one project outcome directed at achieving SGD 6, with focus on sustainability.

BACKGROUND DOCUMENTS AND POLICIES

- Millennium Development Goals,
- Sustainable development Goals (2015 SDSN)
- Securing Sustainable water for All (UN Goal)
- AGENDA 2063 OAU
- Ghana Shared Growth and Development Agenda GSGDAII 2014-2017

GOG VISION

- SUSTAINABLE WATER AND BASIC SANITATION FOR ALL BY 2025
- Water Sector Strategic Development Plan

All people living in Ghana having access to adequate, safe, affordable and reliable basic water service, practice safe sanitation and hygiene and sustainable Management of Water Resources

THE RESEARCH SCOPE

- To Provide insight into the Resources, Institutional Capacities and commitments required to ensure full WSC and Sustainable Water service provision to all Districts in Ghana
 - Identify Challenges of ensuring FC and sustained WASH Service Delivery
 - Identify and prioritise promising strategies in the 3 study Districts
 - Identify the required Resources
 - Finances
 - Human
 - Institutional Arrangements
 - Capacities

METHODOLOGY

- Interviews on opportunities and barriers for going to full scale
- Participatory strategic planning
- Determining required CapEx and CapManEx for ensuring full coverage: Asset management tool development
- Life-cycle costing: study into required and current Opex, CapManEx and ExpDS

STUDY APPROACH/1

- The concept note was developed and reviewed widely among partners (CWSA & IRC)// July 2015
- Inception workshops were conducted for participating districts namely Bongo, East Gonja, and Wa East.
- Protocols for data collection was developed and tested in the Upper West Region, and reviewed further before its application//February 2016.

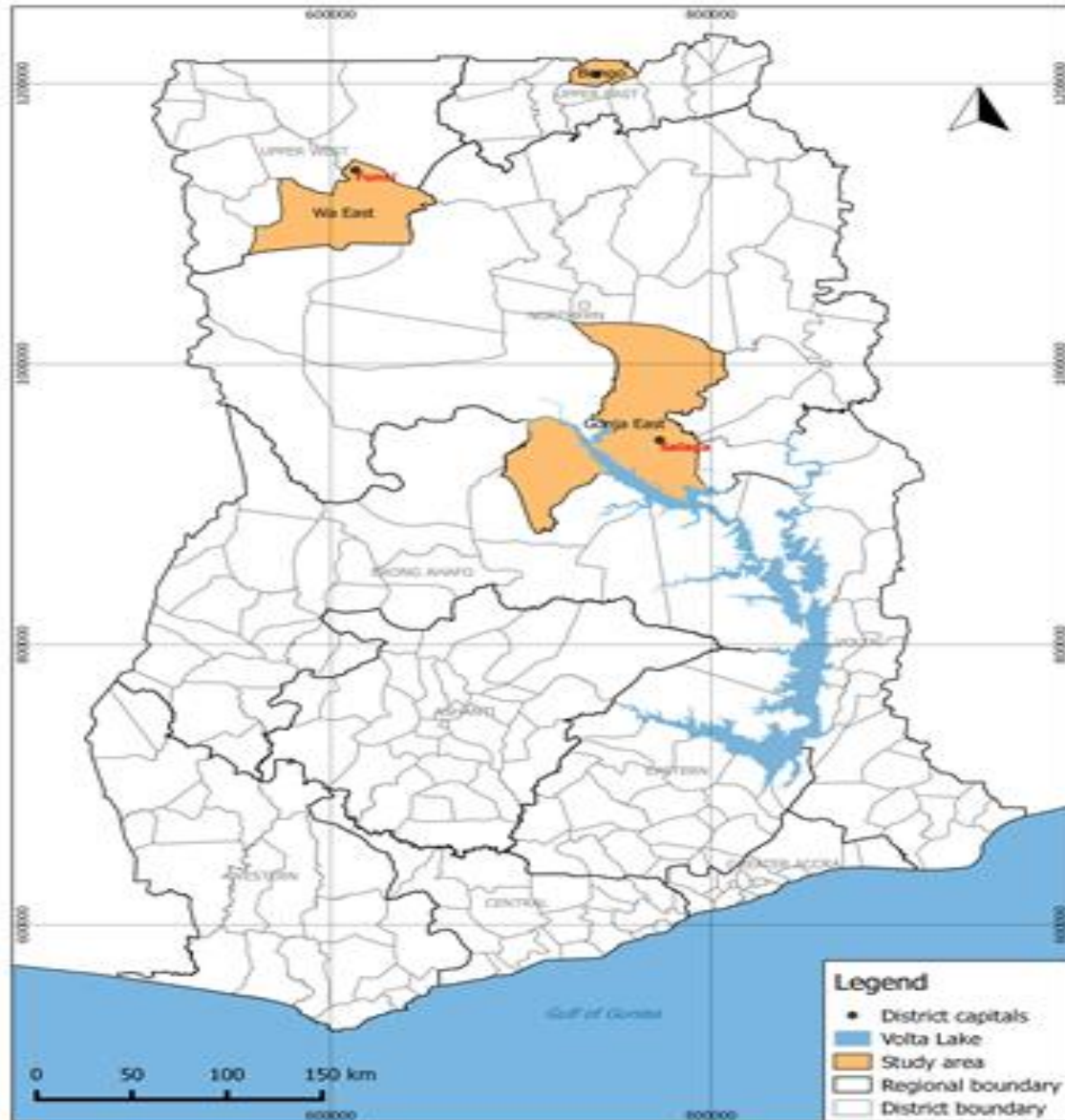
STUDY APPROACH/2

- ❑ Capacity building was carried out for district assembly staff in the three participating districts at Bolgatanga on the protocols.
- ❑ Data was collected in selected communities, at district level and from stakeholders in the WASH sector within the three districts and regions, covering water facility types, capital expenditure, capital maintenance cost, operating cost, implementation strategies etc, which are related to water service sustainability.

STUDY APPROACH/3

- ❑ Training workshop was carried out to build capacity of district teams participating in the research on subject matters such as strategy development, scenario building, facility projections based on CWSA guidelines and research.
- ❑ Validation of data and consolidation of water facility projections was undertaken.
- ❑ Report on the study and its findings prepared.

Map of study area



DISTRICT WATER VISION

District	Water Vision Developed
Bongo	To increase the coverage of sustainable, reliable, safe and accessible water services from 64% to 100% by 2025 in line with the national vision of achieving 100% by 2025
East Gonja	To provide quality water service delivery to all communities and citizens of the District by 2025.
Wa West	To provide and sustain affordable, reliable accessible and safe water services to all communities in Wa East district to improve water coverage from 65% to 100% by 2025

STRATEGIC DEVELOPMENT/1

BONGO

- Mechanize fluoride free boreholes in near communities to serve the fluoride communities
- Installation of fluoride removal treatment plant in fluoride borehole
- Proper co-ordination between the Assembly and its Partner in WASH
- Intensify supervision and monitoring of WASH service delivery
- Re-constitution and formation and capacity building of WSMTs
- Recruitment and training of new Area Mechanics
- Establish linkage between WSMTs and spare parts dealers
- Refresher training of existing Area Mechanics

STRATEGIC DEVELOPMENT/2

EAST GONJA DISTRICT

- Providing boreholes, piped schemes and rainwater harvesting facilities to all communities in the district.
- Organizing periodic training/workshops for D/A and other stakeholders to enhance their capacity in water delivery.
- Formation and training of WSMTS for effective management and operation of their facilities.
- Providing support for the Area mechanics and pump caretakers to monitor point source communities for sustainability of the handpumps.

STRATEGIC DEVELOPMENT/3

- WA EAST
- Private sector management
- Provide capacity building training
- Zoning the District into six parts and each zone should have one Area Mechanics
- Liaising with the private sector for reliable spare parts supply

WATER FACILITIES REQUIRED/1

- **BONGO**

Year/	Borehole (New)	Borehole Rehab.	LMS	STPC
2016	0	0	0	0
2017	63	80	6	0
2018	20	75	6	0
2019	15	69	2	0
2020	10	75	0	1
2021	9	43	0	1
2022	5	17	1	0
2023	4	2	1	0
2024	16	5	1	0
2025	72	5	11	0
Total	214	371	28	2

WATER FACILITIES REQUIRED/2

- EAST GONJA DISTRICT

Year/	Borehole (New)	Borehole Rehab.	STPC
2016	307	0	0
2017	4	0	2
2018	3	2	0
2019	23	11	0
2020	13	4	0
2021	13	38	3
2022	5	11	2
2023	9	5	3
2024	32	68	7
2025	44	281	63
Total	452	420	80

WATER FACILITIES REQUIRED/3

- WA EAST

Year/	Borehole (New)	Borehole Rehab.	LMS	STPC
2016	58	0	0	0
2017	1	0	0	0
2018	1	0	1	0
2019	9	0	1	0
2020	3	0	1	0
2021	5	8	1	0
2022	1	4	1	1
2023	2	0	2	0
2024	20	8	2	2
2025	6	23	3	3
Total	106	43	12	6

FINANCIAL RESOURCES REQUIRED/1

ITEM DESCRIPTION	Bongo	East Gonja	Wa East
	UNIT COST GH¢		
New Borehole(Includes siting, supervision, software, procurement, Installation)	50,000	50,000	80,000.00
Borehole Rehabilitation	15,000	15,000	22,000.00
Limited Mechanised Schemes	250,000	250,000	700,000.00
Small Community Piped Scheme		500,000	800,000.00
Small Town Piped schemes Rehabilitation	100,000.00	8,000,000 for Salaga System and 100,000 for others	1,500,000.00
Small Town Piped Scheme (NEW)	1,500,000.00	1,500,000	1,850,000.00
Monitoring & Evaluation (WATER)			40,000.00
Monitoring & Evaluation (SANITATION)			200,000.00

FINANCIAL RESOURCES REQUIRED/2

Guideline Per Capita Cost for OpEx

- Borehole with handpump: US\$1.00 (GHc 4.3)
- Limited Mechanised System: US\$ 2.5 (GHc 10.76)
- Piped System: US\$ 5.0 (GHc 21.5)
- CapManEx: (Boreholes and handpumps) US\$ 2.0 (GHc 8.6)
- CapManEx: (LMS) US\$3.5 (GHc15.50)
- CapManEx: (STPC) US\$ 7.00 (GHc 30.1)
- Direct Support: (Boreholes with handpumps); US\$ 2.00 (GHc 8.6)
- Direct Support (Piped Scheme) : US 3.0 (GHc 12.9)

- *Source: WASHCostInfosheet, October 2012*

FINANCIAL RESOURCES REQUIRED/3

- SUMMARY OF FINANCIAL RESOURCES

Districts	CapEx	OpEx	CapManEx	Direct Support	Total
Bongo	23,465,000.00	6,778,860.17	4,254,840.00	11,004,006.86	45,502,707.03
East Gonja	49,100,000	57,708.00	1,089,650.00	300,675	50,548,033
Wa East	34,160,000.00	1,118,670.00	946,000.00	1,081,020.00	37,305,690.00
Total (GHC)	106,725,000.00	7,955,238.17	6,290,490.00	12,385,701.86	133,356,430.03

HUMAN RESOURCES REQUIRED/1

- Community Water and Sanitation Agency
- District Assembly
 - The Chief Executive
 - Coordinating Director
 - DPCU/Planning Unit
 - DWD/DWST
 - Schedule Officer/DWST/WASH Team Leader

HUMAN RESOURCES REQUIRED/2

- Private Sector
 - Partner Organisations
 - Consultants
 - Contractors
 - Spare Parts Distributors
 - Area Mechanics
- Community /Small Town WSMTs

INSTITUTIONAL AND HUMAN CAPACITY BUILDING

ASSUMPTIONS

- Population growth Rate is maintained
- Political stability and continuity by successive Governments
- Adequate and regular inflow of fund into the WASH Sector
- Human Resources capacities are maintained and improved
- Bye-laws on WASH are approved, gazetted and enforced
- DAs will form and enforce COM system

RECOMMENDATIONS

- Dedicated funding for WASH activities
- Enhancement of resources both human and logistics support at the DA level
- Institutionalise WASH sub-committee at the DA level
- Mandatory WASH funds to be released on quarterly basis for projects at the District level
- Establish WASH Consortium/stakeholders platform at the District level

EMERGING ISSUES AND WAY FORWARD

- YARD TAPS- bringing water close to the users
- High flouride concentrations in Bongo District

THE END

THANK YOU