

# **MOLE Conference XXVII**

**22 – 24 November, 2016**

**Aqua Safari, Big Ada**

**WaterAid Ghana**

**Water, Sanitation, and Hygiene in  
Schools and Health Care Facilities**

Dr. Chaka Uzongu,

Ag. Head of Policy, Advocacy and  
Campaigns/WASH and Health Focal Lead



# Newborns in Ghana

»“Ghana’s infant and under-five mortality rates reduced over the years, but have stagnated because **neonatal mortality has not reduced significantly**. The current neonatal mortality of 32 deaths per 1000 live births accounts for 40% of under-five mortality in Ghana and continues to rise. Without a concerted effort to tackle causes of neonatal mortality, it would be impossible for Ghana’s goal of reducing under-five mortality to be achieved.”

**“The goal of the Ghana National Newborn Health Strategy and Action Plan (2014 – 2018) is reduction of neonatal mortality rate from 32 per 1000 live births in 2011 to 21 per 1000 live births in 2018, a 5% reduction in neonatal mortality per annum...”**

Source GHS website:

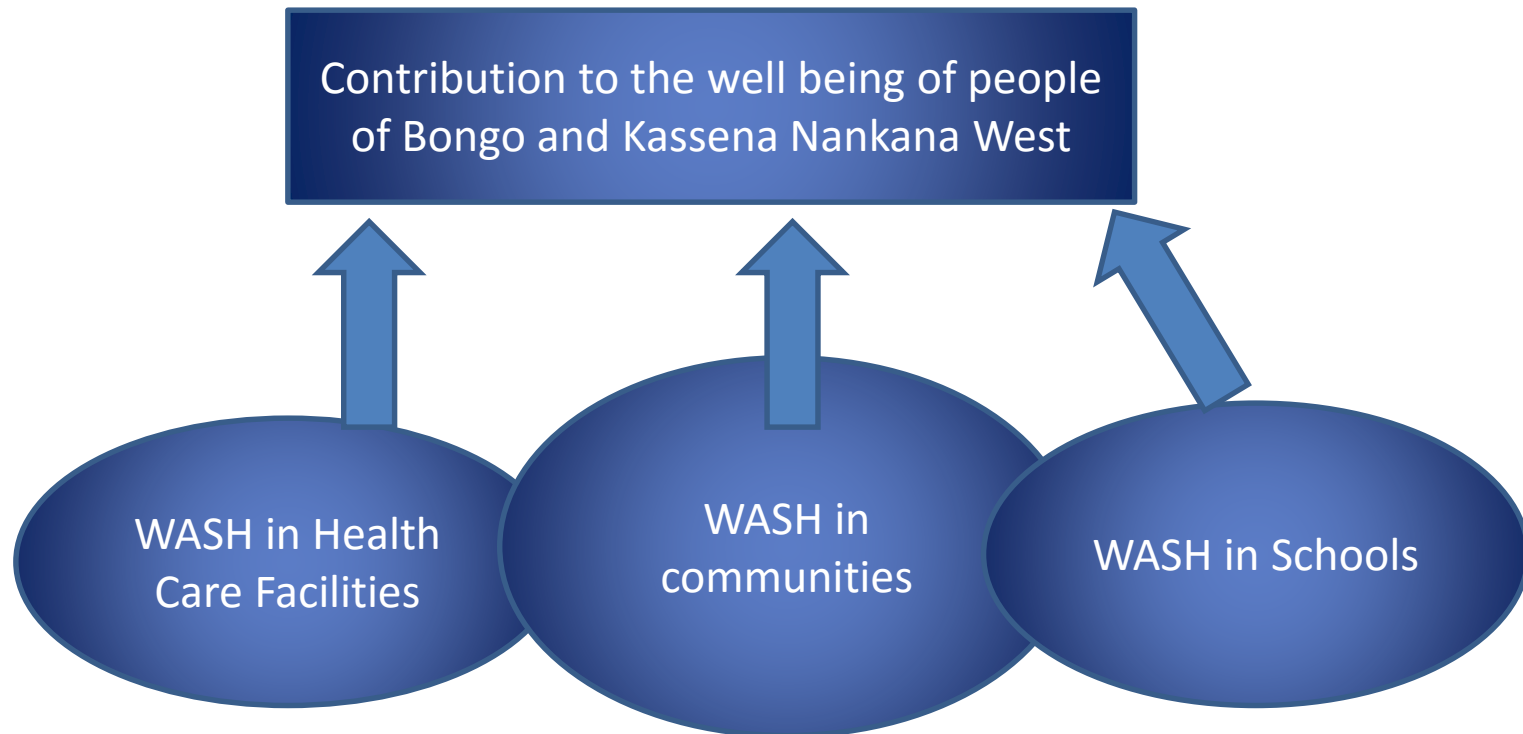
<http://www.ghanahealthservice.org/programme.php?ghs&ghspid=3>





# Healthy Start

# WASH for Public Health Programme (WASH4PHP) 2015-2019

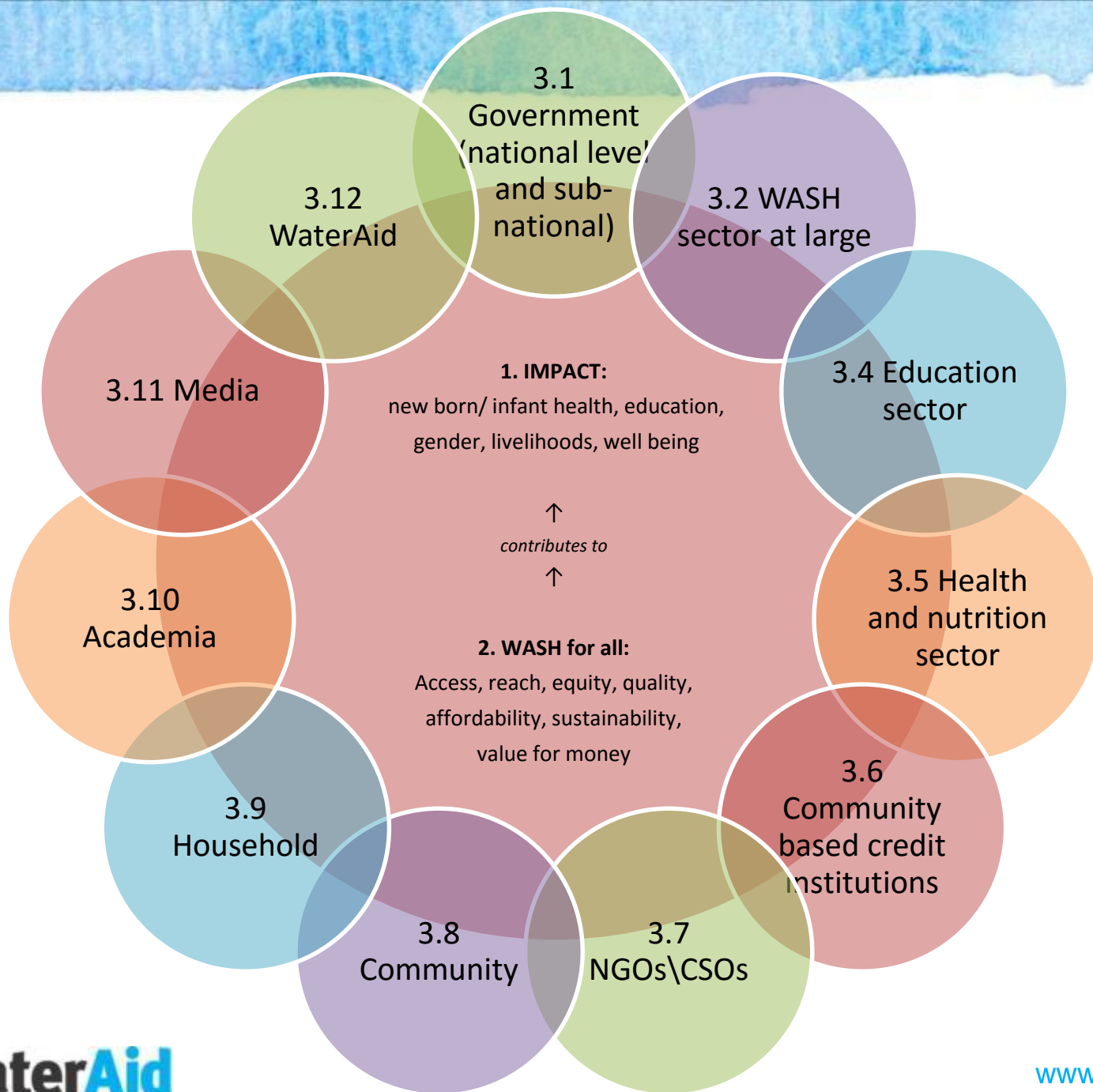


# WASH In Health Care Facilities

## **Preliminary Situational Analysis**

### **Some Initial Findings:**

[Preliminary Situational Analysis Bongo and  
Kassena Nankana West 9 December  
2015.docx](#)



# WASH for Public Health Programme

## Hygiene Behaviour Change

Develop culturally appropriate hygiene behaviour change communication material; support BCC that is community led

e.g. Endogenous Development –Community Hygiene and Sanitation Promotion Process (ED-CHaSP)

## District Wide Focus

- Impact beyond individual communities; District wide positive hygiene behaviour change
- Requires close and sustained collaboration with DAs and

# WASH for Public Health Programme

## Sanitation

- In Health Care Facilities

- Biofill/biogas technologies; incinerators; Laundry facilities; RWH; “waste” water management

- In Schools

- Menstrual Hygiene Management (MHM); Biofill technologies; incinerators; RWH; grey water mgmt.

- In Communities

- Household latrine Usage Promotion & Hygiene Behavioural Change

**Latrine Artisans, Community Health & Hygiene Workers, BCC, & \*community\* WASH financing**



# WASH for Public Health Programme

## Water

- In Health Care Facilities

Mechanized Bore holes (solar powered); RWH; **fluoride removal plants**

- In Schools

- bore hole; roof top rain water harvesting

- In Communities

- Mechanized Bore hole (Solar powered); RWH

# WASH for Public Health Programme

## Capacity Strengthening

MMDA

- Long term strategic planning
- Strategic financial planning
- Operations & Maintenance/ M&E

## Health Systems Strengthening

- WASH and Health Linkages (with GHS)
- BCC (*for HCFs/by HCFs*)

# WASH for Public Health Programme

## Monitoring, Evaluation and Knowledge Management

- Research -- WASH and Health Linkages (GHS )
- Strengthening school based monitoring
- Strengthening health facilities based monitoring
- Sector wide coordination; learning platforms (e.g. UNICEF),
- Sector wide performance monitoring and evaluation

# WASH for Public Health Programme

## Advocacy

- Rooted advocacy
  - Endogenous Development (ED) approach and Human Rights Based Approach (HRBA)
- Budget Tracking: WASH expenditure (esp. sanitation & Hygiene)
- Sector finance
- Institutional strengthening
- Domestic Resource mobilization and Tax Justice
- Decentralization (fiscal)



# Thank You

Contact WaterAid Ghana at [www.wateraid.org/ghana](http://www.wateraid.org/ghana)  
Contact Chaka Uzundu at [chakauzundu@wateraid.org](mailto:chakauzundu@wateraid.org)

# Thank You

Contact WaterAid Ghana at [www.wateraid.org/ghana](http://www.wateraid.org/ghana)  
Contact Chaka Uzongu at [chakauzongu@wateraid.org](mailto:chakauzongu@wateraid.org)

# WASH for Public Health Programme

## Overview of Programme

- [WASH4PHP Output Table\\_Updated\\_7August 2016.xlsx](#)